

Quest Singleton has embraced our responsibility regarding our companies impact on the Environment and have implemented, and would like to share with you, our Environmental Policy.



The Environmental Policy outlines the framework for action taken and for the objectives and targets that we have in place for the future and has been implemented as a core part of our business plan, and is subject to change without notification. The Team at Quest Singleton are committed to our policy and looking forward to reviewing it annually to ensure it remains current and setting even higher targets in lowering the impact of our business on our environment. The main focus being in the areas of Energy, Water, Waste and Purchasing.

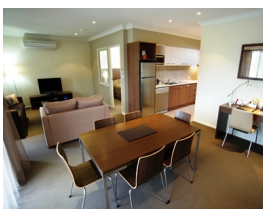
### Actions Speak Louder Than Words

- This policy has been made available to all interested parties on request.
- Our property complies with all applicable environmental legislation as a minimum standard.
- All staff promote the best ways and means of “being green” to all guests as well as fellow staff.
- Use the more Environmentally Friendly forms of Business Travel available.
- Employ local people wherever possible.
- Purchase products that are Environmentally Friendly including Chemicals.
- Increased signage to inform our guests of the recycling options available to them.
- All apartments have been fitted with energy saving globes.
- All common areas have been fitted with sensored lighting to minimise unnecessary use of power.
- All staff encouraged to use recycling options at all times.
- All showers have water saving shower heads installed.
- Procedures in place to eliminate the use of lighting and air conditioning prior to guests arrival in apartments.
- Tank Water captured for watering the Gardens.
- Office paper reused and recycled, cardboards compacted and recycled, telephone books recycled.



### Commitment To The Future

- To continue to learn and understand the issues associated with our operations impact on the Environment.
- Measure the positive affects of action taken, increase and improve our Targets.
- Continue to use environmentally friendly products and suppliers in the future and assess their growth in terms of new technology and products.
- Continue to encourage all staff on an individual basis to be environmentally friendly at work and home at every opportunity.
- Promote a strong environmental ethic as part of the business culture and work to creating an incentive scheme regarding employees.
- We will continue to take measures to
  - Reduce waste at the source
  - Recycle whenever possible
  - Practice responsible energy management throughout the business
  - Encourage guests to use “people power”- Walk or Cycle to your CBD Destinations.
  - Continue to work with the experts to stay aware



**When our guests stay at Quest Singleton, they are supporting an Australian Environmentally Responsible company that cares for the future of our environment.**

**Fiona Drinkwater — General Manager**  
**E: [fdrinkwater@questapartments.com.au](mailto:fdrinkwater@questapartments.com.au)**

